

WEITBLICK

CHEF AND SERVICEWEAR





CONTENTS

04	THIS IS WEITBLICK	08	PRODUCTS
		10	CO:LAB
06	WELCOME TO THE CLUB	14	Chef/Service jackets
		34	Waistcoats
28	CUSTOMER STORY	38	Aprons
		42	Blouses
56	I MADE YOUR CLOTHES	44	Shirts
		46	Trousers
58	CUSTOMISATION	52	Shoes
		54	Accessories

CONSISTENT

Germany is our design location and Europe our production location.

SUSTAINABLE

People and nature are very important to us. Find out more at www.weitblick.vision/nachhaltigkeit

FAST

We provide quick, reliable delivery from our state-of-the-art logistics centre in Alzenau, Germany.

FAIR

We value all the stages in the value chain and ensure that everyone is fairly compensated.

DURABLE

Our clothing is suitable for industrial laundering and can withstand up to 200 washes at temperatures up to 75°.

EXPERIENCED

High product quality from our attention to detail and more than 90 years of experience.

WELCOME TO THE CLUB



EST.
**good food
good mood
club** 2023

Welcome to the Club. What you can see here is the Wall of Fame, with our outstanding brand ambassadors. Are you wondering what connects these restaurateurs and Weitblick? It is the spirit, the passion for high-quality ingredients, the

striving for exceptional quality, and the responsible use of resources. This is exactly the approach you will find in the GOOD FOOD GOOD MOOD CLUB. So we're not associated with work, but with passion and a positive attitude to life.



Scan the code and see the Club members' favourite pieces.



TOBIAS WEYERS



ANNE MANZIUS



HEIKO ANTONIEWICZ



LINH NGUYEN



ANTON SCHMAUS



SASCHA STEMBERG



LUKAS JAKOBI



ANTHONY SARPONG



SIMON KOLAR & MARTIN SCHREINER

PRODUCTS



CO:LAB

Featuring Heiko Antoniewicz

Heiko Antoniewicz is a true connoisseur in the kitchen. He feels at liberty to interpret culinary art in his own way. In his world, everything revolves around enjoyment and aromatic variety. Not just in front of the hob, but also as an author, workshop and seminar initiator, and with his own product creations that bring his world of taste to the home kitchen. A creative, an artist with a lot of passion for culinary culture - the perfect person to start a collaboration with for our culinary community.



Experience Heiko on Instagram:
[@weitblickchefwear](https://www.instagram.com/weitblickchefwear)

Heiko Antoniewicz - Visionary and Chef

Stand out. Inspire. Simply convince. But what exactly is it that characterises and defines a first-class product? It's the finest, carefully selected ingredients. Just a dash more, or a pinch less, if we consider the highest quality chefwear to be our standard. This principle applies on two levels - in fine cuisine and also in the world of fine chefwear. The collaboration between ourselves and Heiko Antoniewicz embodies exactly that. It stands for quality and meaningfulness in the product. For first-class, state-of-the-art products that combine the best ingredients to create the perfect whole.



LESS IS MORE

'The special feature of this CO:LAB collection lies in the use of an exceptional German bi-stretch fabric. The highlight is the incomparable material composition of 47% PES, 47% CO and 6% EOL. For the first time, this is used throughout, rather than just in specific parts. This makes the collection super-elastic and extremely comfortable to wear.'



THOMAS SCHMITT
Senior Product Manager at Weitblick



CHEF SERVICE SHIRT

MEN

Sizes: XXS-5XL
Material: 47% PAS, 47% CO, 6% EOL, approx. 220 g/m²

- Stand-up collar with buttonable
- Apron loop
- Modern cut
- All-over stretch fabric
- Concealed button placket with
- Stainless steel snap fasteners
- With double back yoke
- Adjustable cuff with concealed stainless steel snap fasteners
- Welt pocket on left sleeve



- midnight blue **920670**
- white **920671**
- reed green **920672**



CHEF SERVICE BLOUSE

WOMEN

Sizes: XXS-5XL
Material: 47% PAS, 47% CO, 6% EOL, approx. 220 g/m²

- Stand-up collar with buttonable
- Apron loop
- Modern cut
- All-over stretch fabric
- Concealed button placket with
- Stainless steel snap fasteners
- With double back yoke
- Adjustable cuff with concealed stainless steel snap fasteners
- Welt pocket on left sleeve

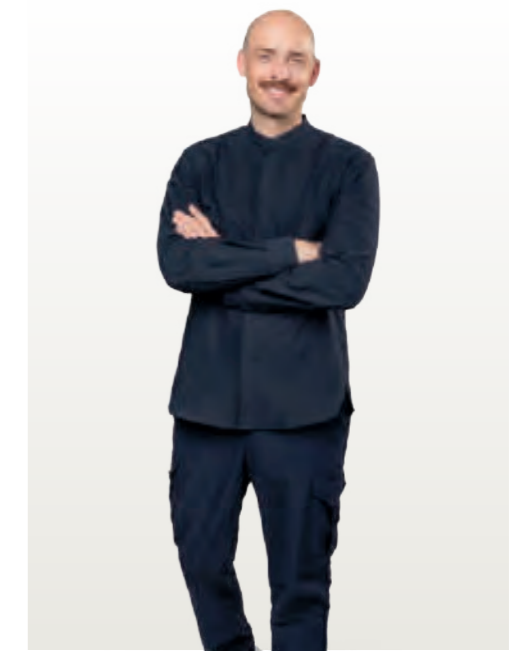


- midnight blue **480690**
- white **480691**
- reed green **480692**



'I FOLLOW MY OWN TASTES'

HEIKO ANTONIEWICZ



UNISEX

COMFORT TROUSERS+

Sizes: XSK-4XLK, XS-4XL, XSL-3XLL*
Material: 47% PAS, 47% CO, 6% EOL, approx. 220 g/m²

- Modern cut
- All-over stretch fabric
- Half elastic waistband with patent button
- Waistband with belt loops
- 2 side pockets
- 2 patch cargo pockets
- 2 patch back pockets



- midnight blue **220670**
- reed green **220672**

*Tall sizes available - please enquire.



‘PLEASURE SHOULD BE AVAILABLE TO EVERYONE’

SASCHA STEMBERG



CHEF SERVICE JACKET

UNISEX

Sizes: XXS-5XL, (denim: XXS-4XL)
Material: 50% PES, 50% CO, approx. 180 g/m², (Denim: 65% PES, 35% CO, approx. 215 g/m²)

- Stand-up collar with apron loop at neck
- Modern cut
- Straight button placket with concealed snap fasteners
- Patch pockets on left sleeve and right back
- Pleat for ease of movement with ventilation slits
- Adjustable cuffs



- white **18260**
- black **18261**
- burgundy **18262**
- midnight blue **18263**
- denim blue **18264**
- denim black **18265**



CHEF SERVICE JACKET

WOMEN

Sizes: XS-4XL
Gewebe: 50% PES, 50% CO, approx. 180 g/m² (Denim: 65% PES, 35% CO, approx. 215 g/m²)

- Stand-up collar with apron loop at neck
- Modern cut
- Straight button placket with concealed snap fasteners
- Patch pockets on left sleeve and right back
- Pleat for ease of movement with ventilation slits
- Adjustable cuffs



- white **490260**
- black **490261**
- burgundy **490262**
- denim blue **490264**
- denim black **490265**





CHEF SERVICE JACKET

UNISEX

Sizes: XXS-4XL
Material: 65% PES, 35% CO, approx. 210 g/m²

- Stand-up collar
- Straight cut
- Contrast elements
- 2-row closure with snap fasteners
- Welt pocket on left chest
- Patch pocket on left upper arm
- Turn-back cuffs



- white/anthracite 188990
- bright red/anthracite 189000
- burgundy/anthracite 189030
- beige/anthracite 189040
- anthracite/black 189050
- black/anthracite 189070



CHEF SERVICE JACKET

WOMEN

Sizes: XS-4XL
Material: 65% PES, 35% CO, approx. 210 g/m²

- Stand-up collar
- Modern cut
- Contrast elements
- 2-row closure with snap fasteners
- Patch pocket on left upper arm
- Turn-back cuffs



- white/anthracite 49909



CHEF SERVICE JACKET

UNISEX/
WOMEN

Sizes: XXS-4XL, XS-4XL (Women)
Material: 65% PES, 35% CO, approx. 210 g/m²

- Stand-up collar with apron loop at neck
- Modern cut
- Asymmetrical button placket
- Concealed snap fasteners
- Patch pocket on left sleeve
- Pleat with ventilation slits through mesh insert
- Turn-back cuffs



- white 180200
- black 180201

- white 490200



*' WITH MY
COCKTAILS,
I SHARE MY
PERSONALITY '*

LINH NGUYEN



CHEF SERVICE JACKET

MEN

Sizes: XS-4XL

Material: 65% PES, 35% CO, approx. 240 g/m²

- Stand-up collar with apron loop at neck
- Modern cut
- Concealed snap fasteners
- Stretch inserts
- Utility pocket on left sleeve
- Welt pocket on left chest
- Turn-back cuffs



● anthracite/pinpoint 18246



CHEF SERVICE JACKET

WOMEN

Sizes: XS-4XL

Material: 65% PES, 35% CO, approx. 240 g/m²

- Stand-up collar with apron loop at neck
- Modern cut
- Concealed snap fasteners
- Stretch inserts
- Utility pocket on left sleeve
- Welt pocket on left chest
- Turn-back cuffs



● anthracite/pinpoint 49146



BISTRO JACKET

MEN

Sizes: XS-4XL
Material: 65% PES, 35% CO, approx. 240 g/m²

- Stand-up collar
- Straight cut
- Snap fasteners concealed from the 4th button on
- Stretch inserts
- Utility pocket on sleeve
- Welt pocket on chest
- Elastic cuffs for easy pushing up



● anthracite/pinpoint **191550**



BISTRO JACKET

WOMEN

Sizes: XS-4XL
Material: 65% PES, 35% CO, approx. 240 g/m²

- Stand-up collar
- Slightly fitted cut
- Snap fasteners concealed from the 4th button on
- Stretch inserts
- Utility pocket on sleeve
- Welt pocket on chest
- Elastic cuffs for easy pushing up



● anthracite/pinpoint **491550**



CHEF SERVICE JACKET

MEN

Sizes: XS-4XL
Material: 49% PES, 49% CO, 2% EOL, approx. 200 g/m²

- Stand-up collar
- Modern cut
- Concealed snap fasteners
- Stretch inserts
- Utility pocket on left sleeve
- Welt pocket on left chest
- Turn-back cuffs



○ white/anthracite **18240**
 ● carmine red/anthracite **18242**
 ● reed green/anthracite **18243**
 ● stone grey/anthracite **18244**
 ● fjord blue/anthracite **18245**



CHEF SERVICE JACKET

WOMEN

Sizes: XS-4XL
Material: 49% PES, 49% CO, 2% EOL, approx. 200 g/m²

- Stand-up collar
- Modern cut
- Concealed snap fasteners
- Stretch inserts
- Utility pocket on left sleeve
- Welt pocket on left chest
- Turn-back cuffs



○ white/anthracite **49140**
 ● carmine red/anthracite **49142**
 ● reed green/anthracite **49143**
 ● stone grey/anthracite **49144**
 ● fjord blue/anthracite **49145**





CHEF SERVICE JACKET

MEN

Sizes: XXS-5XL
Material: 65% PES, 35% CO, approx. 180 g/m² (glen check), approx. 210 g/m² (schwarz)

- Stand-up collar
- Modern cut
- Asymmetrical button placket
- Neck loop with snap fastener
- Turn-back cuffs
- Concealed snap fasteners
- Patch pocket on left sleeve
- Pleat for ease of movement with ventilation slits through mesh insert in back
- Side seams with slit



- black / black glen check **18370**
- black glen check/black **18371**



CHEF SERVICE JACKET

WOMEN

Sizes: XXS-5XL
Material: 65% PES, 35% CO, approx. 180 g/m² (glen check), approx. 210 g/m² (schwarz)

- Stand-up collar
- Modern cut
- Asymmetrical button placket
- Neck loop with snap fastener
- Turn-back cuffs
- Concealed snap fasteners
- Patch pocket on left sleeve
- Pleat for ease of movement with ventilation slits through mesh insert in back
- Side seams with slit



- black / black glen check **49370**
- black glen check / black **49371**



BALL BUTTON JACKET

UNISEX/
WOMEN

Sizes: XS-4XL
Material: 65% PES, 35% CO, approx. 210 g/m²

- Stand-up collar
- Straight cut (men)
- Modern cut (women)
- 2-row closure with buttonholes for attaching a separate button placket and ball buttons
- Patch pocket on left sleeve
- Turn-back cuff
- Band and ball buttons (pack of 12) must be ordered separately with order



- Jacke:**
- white **18430** (Herren)
 - white **494300** (Damen)
- Knopfleiste:**
- white **90630** (Herren)
 - white **90430** (Damen)
- Kugelknöpfe:**
- burgundy **90150**
 - midnight blue **90151**
 - white **90153**
 - black **90154**
 - grey **90156**
 - bright red **90161**



SHORT COAT

WOMEN/
MEN

Sizes: XS-4XL
Material: 65% PES, 35% CO, approx. 210 g/m²

- Stand-up collar
- Modern cut (women)
- Straight cut (men)
- Closure with concealed snap fasteners
- Generous pockets
- Small inside pocket on the right
- Adjustable cuff width



- white/light grey **50011**
- anthracite/black **50022**
- white/light grey **180018**
- anthracite/black **180022**





LIGHT JACKET

MEN

Sizes: XS-4XL

Material: 50% PES, 50% CO, approx. 160 g/m², approx. 180 g/m² (white)

- Stand-up collar
- Straight cut
- Straight placket with snap fastener
- Pen pocket on left sleeve
- Name-tag loop on left chest
- Apron loop at neck
- Pleat for ease of movement with ventilation slits
- Adjustable cuffs



- denim black **191990**
- denim blue **191991**
- white **191992**



LIGHT JACKET

WOMEN

Sizes: XS-4XL

Material: 50% PES, 50% CO, approx. 160 g/m², approx. 180 g/m² (white)

- Stand-up collar
- Modern cut
- Straight placket with snap fastener
- Pen pocket on left sleeve
- Name-tag loop on left chest
- Apron loop at neck
- Pleat for ease of movement with ventilation slits
- Adjustable cuffs



- denim black **491990**
- denim blue **491991**
- white **491992**





DENIM JACKET

MEN

Sizes: XS-4XL
Material: 50% PES, 50% CO, approx. 160 g/m², approx. 180 g/m² (white)

- Stand-up collar
- Straight cut
- Asymmetrical placket with snap fastener
- Neck loop with snap fastener
- Pen pocket on left sleeve
- Breast pocket left
- Buttonable apron loop at neck
- Pleat for ease of movement with ventilation slits
- Adjustable cuffs



- denim black **191090**
- denim blue **191091**



DENIM JACKET

WOMEN

Sizes: XS-4XL
Material: 50% PES, 50% CO, approx. 160 g/m², approx. 180 g/m² (white)

- Stand-up collar
- Tailored cut
- Asymmetrical placket with snap fastener
- Neck loop with snap fastener
- Pen pocket on left sleeve
- Side pocket right
- Buttonable apron loop at neck
- Pleat for ease of movement with ventilation slits
- Adjustable cuffs



- denim black **491090**
- denim blue **491091**



DENIM JACKET HALF SLEEVE

MEN

Sizes: XS-4XL
Material: 65% PES, 35% CO, approx. 215 g/m²

- Stand-up collar
- Straight cut
- Asymmetrical placket with snap fastener
- Breast pocket left
- Pen pocket on left sleeve
- Apron loop at neck
- Pleat for ease of movement with ventilation slits



- denim black **190990**
- denim blue **190991**



LIGHT DENIM JACKET HALF SLEEVE

MEN

Sizes: XS-4XL
Material: 50% PES, 50% CO, approx. 160 g/m²

- Stand-up collar
- Straight cut
- Straight placket with snap fasteners
- Pen pocket on left sleeve
- Name-tag loop on left chest
- Apron loop at neck
- Pleat for ease of movement with ventilation slits



- denim black **199090**



ON A GRAND SCALE

COMPANY CATERING

'Together with Weitblick, we have defined and tested our workwear for all our German locations and implemented it by September 2022. When choosing the clothing, two aspects were essential: clothing for professional chefs that feels comfortable, with a focus on sustainability. Weitblick was always there to help and advise us on these criteria. We would like to thank the team for their competent, cooperative collaboration. As a mutual partner with a sustainability mission, we feel we are in good hands with Weitblick.'

*Olaf Mauthe,
COO Compass Group Food Service / COO Eurest Deutschland*





CHEF SERVICE SHIRT

MEN

Sizes: XXS-4XL

Material: 65% PES, 35% CO (white), 50% PES, 50% CO (denim), approx. 160-165 g/m²

- Stand-up collar
- Modern cut
- Apron loop at neck
- Concealed snap fasteners
- Utility pocket on left sleeve
- Adjustable cuffs



- white (concealed button placket) **920651***
- white (visible button placket) **920655***
- reverse denim (concealed button placket) **920654**
- reverse denim (visible button placket) **920658**



CHEF SERVICE SHIRT

WOMEN

Sizes: XS-4XL

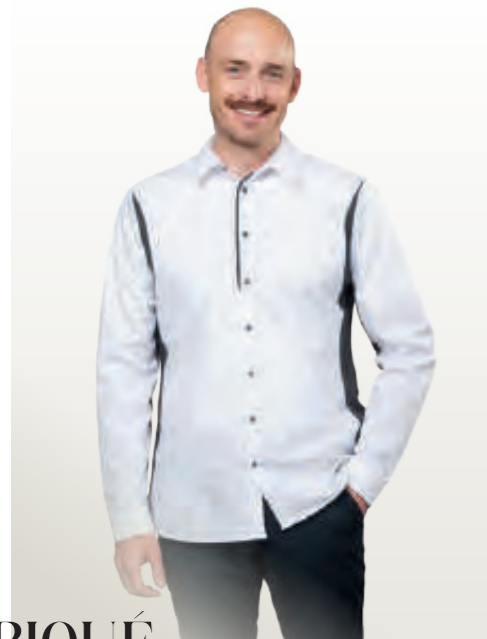
Material: 65% PES, 35% CO (white), 50% PES, 50% CO (denim), approx. 160-165 g/m²

- Stand-up collar
- Modern cut
- Apron loop at neck
- Classic 4-hole button placket
- Utility pocket on left sleeve
- Adjustable cuffs



- white (concealed button placket) **480551***
- white (visible button placket) **480555***
- reverse denim (concealed button placket) **480554**
- reverse denim (visible button placket) **480559**

*The white versions have additional certification with a Green Button.



PIQUÉ SHIRT

MEN

Sizes: XS-4XL

Material: 48% PES, 47% CO, 5% EOL, approx. 140 g/m²

- Turn-down collar
- Modern cut
- Visible button placket
- Breathable piqué inserts
- Stretch inserts for more ease of movement
- Feels light to wear
- Adjustable cuffs



○ white/anthracite **910200**



PIQUÉ BLOUSE

WOMEN

Sizes: XS-4XL

Material: 48% PES, 47% CO, 5% EOL, approx. 140 g/m²

- Turn-down collar
- Modern cut
- Visible button placket
- Piqué inserts
- Stretch inserts for more ease of movement
- Feels light to wear
- Adjustable cuffs



○ white/anthracite **480610**





WAISTCOAT

MEN

Sizes: XS-4XL
Material: 65% PES, 35% CO, approx. 210 g/m²

- Straight cut
- Closure with concealed snap fasteners
- Two welt pockets



- black 140281
- anthracite 140282
- burgundy 140283
- midnight blue 140284



WAISTCOAT

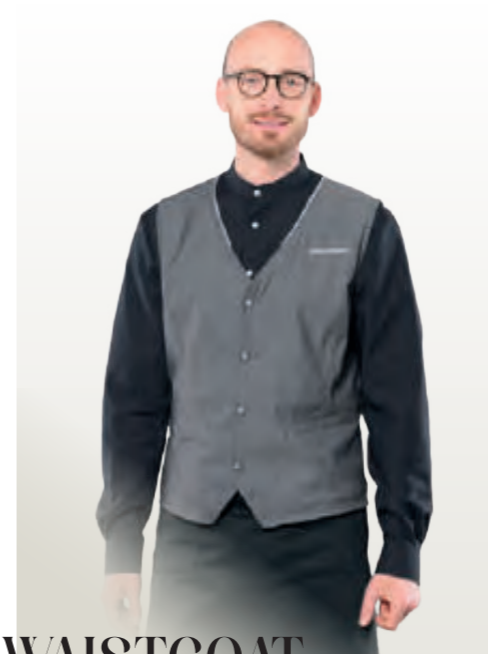
WOMEN

Sizes: XS-4XL
Material: 65% PES, 35% CO, approx. 210 g/m²

- Tailored cut
- Closure with concealed snap fasteners
- Two welt pockets



- black 140181
- anthracite 140182
- burgundy 140183
- midnight blue 140184



WAISTCOAT
DENIM

MEN

Sizes: XS-4XL
Material: 65% PES, 35% CO, approx. 215 g/m²

- Straight cut
- Two welt pockets
- Button placket with snap fasteners
- Back strap with adjustable fastener



- denim black 160890
- denim blue 160891



WAISTCOAT
DENIM

WOMEN

Sizes: XS-4XL
Material: 65% PES, 35% CO, approx. 215 g/m²

- Tailored cut
- Two welt pockets
- Button placket with snap fasteners
- Back strap with adjustable fastener



- denim black 140890
- denim blue 140891



g-k.eu/waistblick



STANDARD 100



**WAISTCOAT
GLEN CHECK** MEN

Sizes: XXS-5XL
Material: 65% PES, 35% CO, approx. 180 g/m²

- Exclusive cut
- Closure with concealed snap fasteners
- 2 Welt pockets
- Neck edged in black



● black glen check/black 15271



**WAISTCOAT
GLEN CHECK** WOMEN

Sizes: XXS-5XL
Material: 65% PES, 35% CO, approx. 180 g/m²

- Exclusive cut
- Closure with concealed snap fasteners
- Two welt pockets
- Neck edged in black



● black glen check/black 14271



**WAISTCOAT
PINPOINT** WOMEN

Sizes: XS-4XL
Material: 65% PES, 35% CO, approx. 240 g/m²

- Tailored cut
- Closure with snap fasteners
- Faux breast pocket left with name-tag opening
- Two side welt pockets
- Slits at hem for ease of movement



● anthracite/pinpoint 141550



**WAISTCOAT
PINPOINT** MEN

Sizes: XS-4XL
Material: 65% PES, 35% CO, approx. 240 g/m²

- Tailored cut
- Closure with snap fasteners
- Faux breast pocket left with name-tag opening
- Two side welt pockets
- Slits at hem for ease of movement



● anthracite/pinpoint 161550





BIB APRON

UNISEX

Sizes: XXS-L, XL-5XL

Material: 65% PES, 35% CO, approx. 210 g/m², approx. 215 g/m² (denim), approx. 240 g/m² (anthracite/pinpoint), approx. 180 g/m² (glen check)

- For tying
- Fully adjustable neck strap
- Large pocket on right with additional utility pocket
- 89370: Ties, utility pocket, bib facing, bellows-style and neckband in black



- | | |
|---|-------------------------------------|
| ○ white 881070
*89265 | ● rust orange 881081 |
| ● black 881071
*89268 | ● pistachio green 881084 |
| ● midnight blue 881079
*89267 | ● apple green 881085 |
| ● burgundy 881076 | ● ocean blue 881089 |
| ● anthracite 881072
*89266 | ● stone grey 881073 |
| ● beige 881082 | ● anthracite/pinpoint 881088 |
| ● bright red 881075 | ● carmine red 881074 |
| ● navy 881078 | ● fjord blue 881077 |
| ● brown 881080 | ● reed green 881083 |
| | ● denim blue 881086** |
| | ● denim black 881087** |
| | ● glen check 89370** |



'NATURE AND THE SEASONS INSPIRE ME.'

ANNE MANZIUS

Anne Manzius



g.k.eu/wentblick



BIB APRON+

UNISEX

Sizes: XXS-S, M-L, XL-2XL, 3-5XL

Material: 65% PES, 35% CO, approx. 210 g/m²

- Can be closed all around with snap fasteners
- Fully adjustable neck strap
- Large pocket on right with additional utility pocket
- Towel loop on left



- | | |
|------------------------------|---------------------------|
| ○ white 89820 | ● anthracite 89822 |
| ● black 89821 | ● beige 89827 |
| ● midnight blue 89826 | ● bright red 89824 |
| ● burgundy 89825 | ● stone grey 89823 |

Other colours on request.



g.k.eu/wentblick



BIB APRON DENIM

UNISEX

Sizes: XXS-S, M-L, XL-2XL, 3-5XL

Material: 65% PES, 35% CO, approx. 250 g/m²

- Bellows-style pocket
- Soft neckband
- Bib part with patch pen pocket
- Belt loops for threading the tie through



- | |
|-----------------------------|
| ● denim black 890990 |
| ● denim blue 890991 |



STANDARD 100



BISTRO APRON

UNISEX

Sizes: XXS-L, XL-5XL
Material: 65% PES, 35% CO, approx. 210 g/m², approx. 215 g/m² (denim), approx. 240 g/m² (anthracite/pinpoint), ca. 180 g/m² (glen check)

- Shaped waistband with ties
- Slot for passing the ties through
- 89371: Ties in black



- | | |
|---------------------------------|-------------------------------------|
| ○ white 891738 | ● apple green 891735 |
| ● black 891743 | ● ocean blue 891755 |
| ● midnight blue 891749 | ● stone grey 891744 |
| ● burgundy 891747 | ● anthracite/pinpoint 891745 |
| ● anthracite 891739 | ● carmine red 891742 |
| ● beige 891733 | ● fjord blue 891741 |
| ● bright red 891746 | ● reed green 891740 |
| ● navy 891748 | ● denim blue 891736** |
| ● brown 891731 | ● denim black 891737** |
| ● rust orange 891732 | ● glen check 89371** |
| ● pistachio green 891734 | |



g-k.eu/weitblick



HALF APRON

UNISEX

Sizes: XXS-L, XL-5XL
Material: 65% PES, 35% CO, approx. 210 g/m², approx. 215 g/m² (denim), approx. 240 g/m² (anthracite/pinpoint), approx. 180 g/m² (glen check)

- For tying
- Shaped waistband
- Large pocket on right with additional utility pocket
- 89471: Key loop, ties, utility pocket, bellows style and key loop in black



- | | |
|---------------------------------|-------------------------------------|
| ○ white 881100 | ● apple green 881115 |
| *89305 | ● ocean blue 881119 |
| ● black 881101 | ● stone grey 881103 |
| *89308 | ● anthracite/pinpoint 881118 |
| ● midnight blue 881109 | ● carmine red 881104 |
| *89307 | ● fjord blue 881107 |
| ● burgundy 881106 | ● reed green 881113 |
| ● anthracite 881102 | ● denim blue 881116** |
| *89306 | ● denim black 881117** |
| ● beige 881112 | ● glen check 88471** |
| ● bright red 881105 | |
| ● navy 881108 | |
| ● brown 881110 | |
| ● rust orange 881111 | |
| ● pistachio green 881114 | |



g-k.eu/weitblick



*Basic version also available without a pocket (other colours available on request as special order).
 **Glen check and denim aprons are excluded from the Green Button.



SHORT APRON

UNISEX

Sizes: onesize
Material: 65% PES, 35% CO, approx. 210 g/m², approx. 215 g/m² (denim), approx. 240 g/m² (anthracite/pinpoint), approx. 180 g/m² (glen check)

- For tying
- Large multifunctional pocket with 4-way opening
- 88472: Key loop and ties in black



- | | |
|--------------------------------|-------------------------------------|
| ○ white 88311 | ● apple green 88326 |
| ● black 871353 | ● ocean blue 88327 |
| ● midnight blue 88321 | ● stone grey 871354 |
| ● burgundy 88318 | ● anthracite/pinpoint 871355 |
| ● anthracite 88312 | ● carmine red 871352 |
| ● beige 88324 | ● fjord blue 871351 |
| ● bright red 88320 | ● reed green 871350 |
| ● navy 88316 | ● denim blue 88315** |
| ● brown 88322 | ● denim black 88314** |
| ● rust orange 88323 | ● glen check 88472** |
| ● pistachio green 88325 | |



g-k.eu/weitblick



BLOUSES

WOMEN

Sizes: XS-4XL (flecked, check, denim),
XXS-4XL (plain, striped)
Material: 50% PES, 50% CO, approx.
125-160 g/m²

- Modern fit
- Turn-down or stand-up collar
- Snap fasteners in mother-of-pearl look (flecked, check, plain, striped)
- Adjustable cuffs

PLAINCOLOURED



white
480365



black
480366



grey flecked
480819



light blue flecked
480818



black flecked
480815



medium blue flecked
480817



burgundy flecked
480816



GOOD FOR PEOPLE.
GOOD FOR NATURE.
g-k.eu/weitblick

CHECKED *Modern Vichy check*



black/vichy
480800



light grey/vichy
480808



dark blue/vichy
480804



mid-blue/vichy
480802



light blue/vichy
480803

- burgundy/vichy 480801
- beige/vichy 480805
- light green/vichy 480806
- olive/vichy 480807
- bright red/vichy 480809
- rust orange/vichy 480810
- dark blue/burgundy/vichy 480811



STANDARD
100

STAND-UP COLLAR



white
480443



black
480442



grey flecked
480419



light blue flecked
480440



GOOD FOR PEOPLE.
GOOD FOR NATURE.
g-k.eu/weitblick

DENIM



denim black
480990



denim blue
480991



STANDARD
100

STRIPED *Subtle striped design*



black & white
striped
480364



light grey & white
striped
480360



light blue & white
striped
480362



navy & white
striped
480363



sand & white
striped
480361

STRIPED SHORT SLEEVE

- black & white 480264
- light grey & white 480260
- light blue & white 480262
- navy & white 480263
- sand & white 480261



STANDARD
100

SHIRTS

PLAINCOLOURED



white
910165



black
910166

FLECKED



grey flecked
920819



light blue flecked
920818



black flecked
920815



medium blue flecked
920817



burgundy flecked
920816

**GREEN
BUTTON**
GOOD FOR PEOPLE.
GOOD FOR NATURE.
g-k.eu/weiblick

CHECKED *Modern Vichy check*



black/vichy
920800



light grey/vichy
920808



dark blue/vichy
920804



mid-blue/vichy
920802



light blue/vichy
920803

- burgundy/vichy 920801
- beige/vichy 920805
- light green/vichy 920806
- olive/vichy 920807
- bright red/vichy 920809
- rust orange/vichy 920810
- darkblue/burgundy/vichy 920811

**OEKO
TEX®**
STANDARD
100

STAND-UP COLLAR



white
910443



black
910442



grey flecked
910419



light blue flecked
910440

**GREEN
BUTTON**
GOOD FOR PEOPLE.
GOOD FOR NATURE.
g-k.eu/weiblick

DENIM
2 patch chest pockets



denim black
910990



denim blue
910991

**OEKO
TEX®**
STANDARD
100

STRIPED *Subtle striped design*



black & white striped
910164



light grey & white striped
910160



light blue & white striped
910162



navy & white striped
910163



sand & white striped
910161

**OEKO
TEX®**
STANDARD
100



SHIRTS

MEN

Sizes: XS-4XL **Material:** 50% PES,
50% CO, approx. 125-160 g/m²

- Modern fit
- New Kent or stand-up collar
- Snap fasteners in mother-of-pearl look (flecked, check, plain, striped)
- Adjustable cuffs



MEN



WOMEN

TROUSERS

Sizes: 21-34, 40/42, 44-68, 86-130*

Material: 63% PES, 34% CO, 3% EOL, approx. 245g g/m², Pepita (Houndstooth): 65% PES, 35% CO, approx. 210 g/m²

- Modern fit
- Fabric with stretch content (white, black)
- Adjustable waistband
- Trousers with zipper and patent button
- Two side pockets
- Two back pockets



- white **20071** (Green Button certified)
- black **20072** (Green Button certified)
- black & white pepita (houndstooth) **20075**
- blue & white pepita (houndstooth) **20076**

*Tall sizes available - please enquire.

TROUSERS

Sizes: 17-30, 34-60, 68-112*

Material: 63% PES, 34% CO, 3% EOL, approx. 245g g/m², Pepita (Houndstooth): 65% PES, 35% CO, approx. 210 g/m²

- Modern fit
- Fabric with stretch content (white, black)
- Adjustable waistband
- Trousers with zipper and patent button
- Two side pockets
- Two back pockets



- white **21071** (Green Button certified)
- black **21072** (Green Button certified)
- black & white pepita (houndstooth) **21075**
- blue & white pepita (houndstooth) **21076**



g-k.eu/weitblick



COMFORT PANTS

black & white pepita (houndstooth) 20475



UNISEX

COMFORT PANTS

Sizes: XSK-4XLK, XS-4XL, XSL-3XLL*

Material: 65% PES, 35% CO, approx. 210 g/m², 180 g/m² (black/glen check black)

- Regular fit
- Half-elastic with inner cord
- Two side pockets
- One back pocket on right



- white **20101** (Green Button certified)
- black **20111** (Green Button certified)
- black & white pepita (houndstooth) **20475**
- blue & white pepita (houndstooth) **20476**
- black & glen check **22371**



STANDARD 100



MEN



WOMEN

COMFORT PANTS+

Sizes: XSK-4XLK, XS-4XL, XSL-3XLL*
Material: 47% PES, 46% CO, 7% EOL,
 approx. 270 g/m²

- Modern fit
- All-over stretch fabric
- Half-elastic waistband with cord all round
- Two side pockets
- Two back pockets



- white **20028**
- black **20029**

COMFORT PANTS+

Sizes: XSK-4XLK, XS-4XL, XSL-3XLL*
Material: 47% PES, 46% CO, 7% EOL,
 approx. 270 g/m²

- Modern fit
- All-over stretch fabric
- Half-elastic waistband with cord all round
- Two side pockets
- Two back pockets



- white **21028**
- black **21029**



*Tall sizes available - please enquire.





UNISEX

CARGO PANTS

Sizes: XSK-4XLK, XS-5XL, XSL-3XLL*

Material: 65% PES, 35% CO, approx. 180 g/m²

- Modern fit
- Tapered and elasticated at ankle
- Two side pockets
- Two cargo pockets on legs with concealed DRK flaps
- Back welt pocket on each side
- Elastic waistband with external cord
- With knee darts



● black/glen check



MEN

CARGO PANTS

Sizes: 21-34, 40/42, 44-68, 86-130*

Material: 63% PES, 34% CO, 3% EOL, approx. 245 g/m²

- Modern fit
- High degree of wearing comfort
- Adjustable waistband with belt loops
- Trousers with zipper and patent button
- Two side pockets
- One cargo volume pocket
- Two back pockets



○ white 20095

● black 20096



WOMEN

CARGO PANTS

Sizes: 17-30, 34-60, 68-112*

Material: 63% PES, 34% CO, 3% EOL, approx. 245 g/m²

- Modern fit
- High degree of wearing comfort
- Adjustable waistband with belt loops
- Trousers with zipper and patent button
- Two side pockets
- One cargo volume pocket
- Two back pockets



○ white 21095

● black 21096

*Tall sizes available - please enquire



g-k.eu/wenblick

CATER

MEN | WOMEN



black
42138*

black
42136*

Sizes: Men: 38-47,
Women: 35-42
Weight: approx. 426 g
(size 42)
Upper material: Leather

Padded collar, removable
padded insole, metal-free.

OLD SCHOOL

UNISEX



black
42126

white
42127*

Sizes: 36-47
Weight: approx. 380 g
(size 42)
Upper material: Leather

Removable, padded,
double-layer cushioned
insole, metal-free

EVOLUTION

MEN



black
42130

white
42131*

Sizes: 39-47
Weight: approx. 390 g
(size 42)
Upper material: Mesh
fabric

Removable padded
insole, extra cushioning
in the heel for greater
comfort, easy to clean,
lightweight upper ma-
terial, metal-free.

REVOLUTION

WOMEN



black
42128

white
42129*

Sizes: 35-42
Weight: approx. 390 g
(size 42)
Upper material: Mesh
fabric

Removable padded
insole, extra cushioning
in the heel for greater
comfort, easy to clean,
lightweight upper ma-
terial, metal-free.

GRIND

MEN



black & white
42142*

100%
vegan

Sizes: 39-47
Weight: approx. 420 g
(size 42)
Upper material: Denim

Gel insole and padding;
easy slip-on style; op-
tional laces for a classic
sneaker look; foot arch
ventilation with three
openings; water-repel-
lent, waxed upper;
metal-free; easy to clean.

MAVEN

WOMEN



black & white
42140*

100%
vegan

Sizes: 35-43
Weight: approx. 420 g
(size 42)
Upper material: Denim

Gel insole and padding;
easy slip-on style; op-
tional laces for a classic
sneaker look; foot arch
ventilation with three
openings; water-repel-
lent, waxed upper; metal-
free; easy to clean.

FREESTYLE

MEN



black
42124*

black & white
42125

Sizes: 39-47
Weight: approx. 345 g
(size 42)
Upper material:
Synthetic

Padded collar and
tongue; removable,
padded insole; outsole
with large stud pattern;
lightweight and robust
upper material; metal-free.

LIBERTY

WOMEN



black
42122*

black & white
42123

Sizes: Black: 35-43,
Black & White: 35-42
Weight: approx. 345 g
(size 42)
Upper material:
Synthetic

Padded collar and ton-
gue; removable, padded
insole; outsole with large
stud pattern; lightweight
and robust upper mate-
rial; metal-free.

FINN

MEN



black
42143

Sizes: 39-47
Weight: approx. 448 g
(size 42)
Upper material: Leather

Easy slip-on, optional
laces for a classic sneaker
look, gel insole and pad-
ding, foot arch ventilation
with three openings,
water-repellent waxed
upper, metal-free, easy to
clean.

MAVI

WOMEN



black
42141

Sizes: 35-43
Weight: approx. 448 g
(size 42)
Upper material: Leather

Easy slip-on, optional
laces for a classic sneaker
look, gel insole and pad-
ding, foot arch ventilation
with three openings,
water-repellent waxed
upper, metal-free, easy to
clean.

CONDOR

UNISEX



black
42153

white
42154

Sizes: 35-47
Weight: approx. 468 g
(size 42)
Upper material: Leather
**EN ISO 20347:2012
(O B E SRC)**

Padded collar and ton-
gue; removable padded
insole; soft leather upper
with protective mem-
brane; metal-free; stable;
robust.

EVERLIGHT

MEN | WOMEN



black
42156

black
42155

Sizes: Men: 39-47,
Women: 35-42
Weight: approx. 191 g
(size 42)
Upper material: Woven
**EN ISO 20347:2012
(O B E SRC)**

High-quality membrane
inner lining to protect
against liquid; high
cushioning comfort
and pleasant to wear;
flexible outsole; easy to
clean; metal-free; water-
repellent.

SALOON

MEN | WOMEN



black
42139*

black
42137*

Sizes: Men: 39-47,
Women: 35-42
Weight: approx. 451 g
(size 42)
Upper material: Leather

Removable padded insole,
high-quality non-slip out-
sole with trip protection,
metal-free, water-repel-
lent, easy to clean.

KARINA

WOMEN



black
42132

white
42133

extra
light

Sizes: Black: 35-43,
White: 35-42
Weight: approx. 230 g
(size 38)
Upper material:
Synthetic

Removable padded inso-
le, lightweight with extra
cushioning and lacing,
metal-free.

*This model can be ordered from our customer service.

NECK SCARF
UNISEX

Sizes: One size
Material: 65% PES, 35% CO,
approx. 210 g/m², approx. 240 g/m²
(pinpoint), approx. 215 g/m² (denim)

Dimensions: approx. 117 cm x 50 cm (WxH) (side length approx. 76 cm), triangular scarf, one-colour.



anthracite **90788** black **90785** midnight blue **90786** burgundy **90787**

- white **90784**
- black **90785**
- midnight blue **90786**
- burgundy **90787**
- anthracite **90788**
- bright red **90789**
- anthracite/pinpoint **90550**
- denim blue **90546****
- denim black **90545****



BANDANA
UNISEX

Sizes: One size
Material: 65% PES, 35% CO,
approx. 210 g/m², approx. 240 g/m²
(pinpoint), approx. 215 g/m² (denim)

Can be combined individually, ties at the neck.



stone grey **74561** denim blue **740991** midnight blue **74564** anthracite **74565**

- white **74566**
- black **74560**
- midnight blue **74564**
- burgundy **74568**
- anthracite **74565**
- beige **74567**
- bright red **74562**
- stone grey **74561**
- anthracite/
pinpoint **74555**
- denim blue **740991****
- denim black **740990****



SERVICE TIE
UNISEX

Sizes: One size
Material: 65% PES, 35% CO,
approx. 210 g/m², approx. 240 g/m²
(pinpoint), approx. 215 g/m² (denim),
approx. 180 g/m² (Glen check)

Wide short tie design, individually adjustable with loop system.



bright red **90764** burgundy **90765** anthracite/
pinpoint **90555** black
glen check **90371**

- black **90760**
- midnight blue **90768**
- burgundy **90765**
- anthracite **90761**
- bright red **90764**
- anthracite/pinpoint **90555**
- denim blue **90547****
- denim black **90548****
- glen check **90371****



CHEF SKULL CAP
UNISEX

Sizes: Universal size
(Head circumference 54-63 cm)
Material: 65% PES, 35% CO,
approx. 210 g/m², approx. 240 g/m²
(pinpoint), approx. 215 g/m² (denim)

4-way adjustable with snap fasteners.



black **74105** midnight blue **74106** anthracite **74108** bright red **74109**

- white **74104**
- black **74105**
- midnight blue **74106**
- burgundy **74107**
- anthracite **74108**
- bright red **74109**
- anthracite/pinpoint **74110**
- denim blue **74112****
- denim black **74111****



BELT BAG
UNISEX

Sizes: onesize
Material: 65% PES, 35% CO,
approx. 210 g/m², approx. 240 g/m²
(pinpoint), approx. 215 g/m² (denim)

Finished size, without loops: approx. 21 cm x 19.5 cm (WxH), two loops on the belt to fasten it, one large bag with inside zip pocket, key loop, two small utility pockets.



white **90593** beige **90599** denim blue **90579** denim black **90578**

- white **90593**
- black **90594**
- midnight blue **90595**
- burgundy **90596**
- anthracite **90597**
- beige **90599**
- bright red **90598**
- anthracite/pinpoint **90559**
- denim blue **90579****
- denim black **90578****



CHEF HAT
UNISEX

Sizes: XS-S (Head circumference 54-57),
M-L (Head circumference 58-61)
Material: 65% PES, 35% CO,
approx. 210 g/m²

With ventilation eyelets,
2-way adjustable with
press studs.



white **74056**

- white **74056**
- black **74057**
- midnight blue **74064**



FLAT CAP
UNISEX

Sizes: XS-S (Head circumference 54-57), M-L (Head circumference 58-61), XL-2XL (Head circumference 62-65 cm)

Material: 65% PES, 35% CO,
approx. 180 g/m² (Glen check),
approx. 210 g/m²
Individually customisable.



black **74059**

- white **74058**
- black **74059**
- midnight blue **74067**
- glen check **74272**



**Glen check and denim items are excluded from the Green Button.



PEOPLE AND NATURE

OUR FOCUS

Fair working and trading relationships are important to us. This is why Weitblick maintains a long-term cooperation with its production companies and suppliers. It is essential to be transparent and to respond to the needs of employees in other European countries. Regular visits to the companies are a self-imposed duty for us. Furthermore, our ethical business and purchasing practices are based on international human rights conventions, the ILO core labour standards, and OECD recommendations

We act in a similar way when it comes to our clothing – in harmony with people and nature. Great attention is therefore paid to the quality of the items, because nothing is as sustainable as a product with a long lifespan. We make no compromises when selecting materials, fabrics and fixings. We set strict standards and check very carefully which materials meet our requirements – and good intentions are not enough here. This is why we literally put our seal on our commitment and, as a company, live up to the high standards that reflect our idea of sustainability.

**GREEN
BUTTON**
GOOD FOR PEOPLE,
GOOD FOR NATURE.

**OEKO
TEX®**
STANDARD
100

**OEKO
TEX®**
STeP

**OEKO
TEX®**
MADE IN
GREEN

**OEKO
TEX®**
RESPONSIBLE
BUSINESS

MAKE IT YOUR OWN

IN TWO EASY STEPS

We will be happy to help you decide on the right customisation for your clothing. Just give us a call or send us an email.

Telefon: 06027-506 100
E-Mail: service@weitblick.vision



STEP 1 CHOOSE YOUR TYPE OF FINISHING



DIRECT EMBROIDERY

Elegant appearance, robust quality, highly washable, washable up to 90°.



STITCHED AND WEB EMBLEM

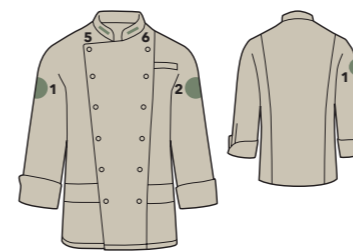
Simple, quick, robust, reusable, washable up to 90°.



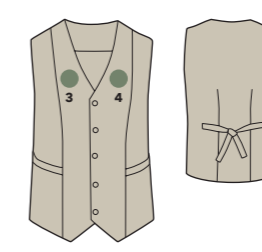
THERMO TRANSFER PRINTING

Sharp print, flat, robust, complex shapes, washable up to 60°.

STEP 2 CHOOSE THE PLACEMENT



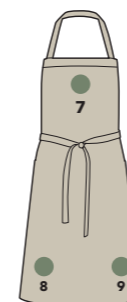
CHEF/SERVICE JACKETS



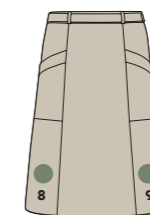
WAISTCOATS



SHIRTS AND BLOUSES



BIB APRONS



APRONS

- 1 Sleeve, right
- 2 Sleeve, left
- 3 Chest height, right
- 4 Chest height, left
- 5 Collar, right
- 6 Collar, left
- 7 Bib
- 8 Apron, right
- 9 Apron, left

Not all finishing options are possible on all items.

LET'S TALK



ANDRÉ KREBS
COLLABORATIONS MANAGER,
CHEFWEAR

I will accompany you on your journey to finding personalised chef and service wear with which you feel completely comfortable. Why do I personally completely support Weitblick, and want to recommend it to you? Because service, quality and sustainability create an unbeatable price-performance ratio that will completely convince you! This is our promise.

